

Guide  
Dogs  
TAS

# SUPER SCHOOLS

By dressing up this September, you're helping Guide Dogs Tasmania raise heroes!



REGISTRATION KIT

# What's in this kit?

About Super Schools .....	1
About Guide Dogs Tasmania .....	2
How to get started .....	4
Supercharge your fundraising .....	5
Spread the word! .....	6
Resources .....	7
How to register .....	14
Registration form .....	14
Fundraising agreement .....	15
Remittance form .....	16
Frequently asked questions .....	17





# About Super Schools

Here at Guide Dogs Tasmania, we raise heroes, the furry four-legged kind that change the lives of Tasmanians living with low vision, disability and illness.

This September Guide Dogs Tasmania is inviting you, your childcare, early learning centre, primary, high school or community group to register and host a superhero dress-up day on any date in September.

With a gold coin donation from every student who dresses up for Super Schools, you can help us help raise much-needed funds and awareness for Guide Dogs Tasmania's Guide and Assistance Dogs-in-training.

Every school that takes part will receive a certificate and special thankyou video message, and go in the running to win a very special visit from Guide Dogs Tasmania with our Ambassador Dogs, Paris and Murphy.



# About Guide Dogs Tasmania

As the only organisation raising and training Guide and Assistance Dogs in Tasmania, we work to bring independence, safety, and inclusion to people in our own community. Our remarkable dogs make a life-changing difference for Tasmanians living with low vision, disability and illness.

The beautiful dogs in our program do so much more than help people who are vision impaired to navigate the world around them. They do more than settle and calm a child living with autism, or someone struggling with trauma or illness.

They give the gift of independence and confidence to their handlers. They bring joy and companionship, hope and opportunity, not only to the people whose lives they are changing, but also to their families.

It takes over two years and costs more than \$50,000 to train a Guide or Assistance Dog. Guide Dogs Tasmania relies on the support of the community to provide these life-changing services to Tasmanians in need.





# Join the fun!

Being part of Super Schools is a PAWsome way for you and your school to have heaps of fun while supporting Guide Dogs Tasmania. By taking part and dressing up for the day, your students will be helping support Guide and Assistance Dogs in training.

You can take your school's dress-up day to whatever level you like, keep it simple, get creative or go crazy with your imagination and full fancy dress costumes! The sky's the limit with ideas to host additional fundraising activities to test and challenge your superpower fundraising skills.

This is also a great opportunity for awareness and education by learning about Guide Dogs Tasmania and how Guide and Assistance Dogs help people in our community.



# How to get started

1

Register your school through our online fundraising platform [guidedogstas.grassrootz.com/super-schools](https://guidedogstas.grassrootz.com/super-schools) or complete and return the enclosed registration form

2

Pick a date in September for your superhero dress-up day

3

Receive a money box for every class (we'll send one to you once you've registered)

4

Spread the word, encourage family and friends to support your Super School day

5

Get dressed up as a superhero, and bring a gold coin to school to put in the special money box

6

Supercharge your fundraising with extra superhero activities during September

7

Count the money in your class money box, and bank the funds using your fundraising page, by direct deposit or by cheque

# Supercharge your fundraising

Are you super excited to be fundraising for Guide Dogs Tasmania and want to do something extra to help supercharge your fundraising?

As part of, or in addition to, your Super Schools dress-up day you could also host a raffle, BBQ lunch, car or dog wash, cake stall, morning tea or book stall to boost your fundraising target!



Sausage Sizzle



Book Sale



Cake Stall



Car or Dog Wash



Morning Tea



Raffle

If your school would like to host additional fundraising activities, please email **[superschools@guidedogstas.com.au](mailto:superschools@guidedogstas.com.au)** and we will provide you with a letter of authority to supercharge your fundraising.



# Spread the word!

You can use posters, flyers, email, websites, social media (Instagram, Facebook, Tik Tok and Twitter), telephone, the media, newsletters and good old-fashioned word of mouth to promote your event.

If your friends, family, colleagues and other networks are internet and email users, consider creating your own online fundraising page through our online fundraising platform:

**[guidedogstas.grassrootz.com/super-schools](https://guidedogstas.grassrootz.com/super-schools)**

Online fundraising is fun, easy and effective. Within minutes you can build your own personal fundraising page and send it out to all your friends and family, asking them to support you, because it is important to you and your cause.

A fundraising page will allow you to accept additional donations online, so you don't have to worry about collecting money, handling cash or writing receipts. All proceeds come directly to Guide Dogs Tasmania.

You can also upload photos, write blog entries, and keep track of your total on your fundraising page.

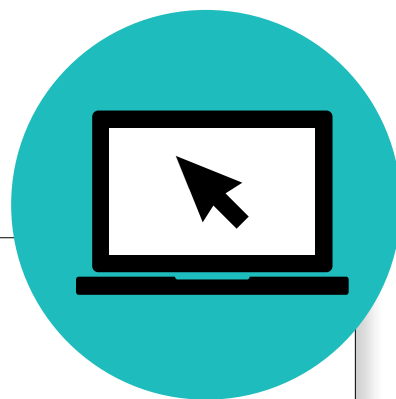
For older kids and teachers, we encourage you to take up the superhero challenge on Tik Tok – strike the ultimate superhero pose with the hashtags #superherochallenge #superherochallengeguidedogstas #superschoolsguidedogstas #weraiseheroesgdt #guidedogstas





# Resources

## Email Template



Dear [INSERT NAME]

This September, our school is hosting a Super Schools dress up day to help Guide Dogs Tasmania raise heroes!

Guide Dogs Tasmania provides life-changing services with Guide and Assistance Dogs to Tasmanians living with low vision, disability and illness.

Guide and Assistance Dogs give the gift of safety and independence to their handlers so they can live the life of their choosing. It takes over two years and costs over \$50,000 to train a Guide or Assistance Dog. Our school is suPAW excited to help support such an amazing cause.

Please help us be super heroes and donate to our Super Schools day and help raise funds for Guide Dogs Tasmania! Donating is quick and easy.

Simply go to: [INSERT LINK TO YOUR ONLINE FUNDRAISING PAGE]

Thank you

[INSERT NAME]





This September, our school is hosting a Super Schools dress-up day to help Guide Dogs Tasmania raise heroes!

Guide Dogs Tasmania provides life-changing services with Guide and Assistance Dogs to Tasmanians living with low vision, disability and illness.

Guide and Assistance Dogs give the gift of safety and independence to their handlers so they can live the life of their choosing. It takes over two years and costs over \$50,000 to train a Guide or Assistance Dog.

Our school is suPAW excited to help support such an amazing cause.

Please help us be super heroes and donate to our Super Schools day and help raise funds for Guide Dogs Tasmania! Donating is quick and easy.

Simply go to: [INSERT LINK TO YOUR ONLINE FUNDRAISING PAGE]

Thank you

S	C	O	M	M	U	N	I	T	Y	H	Q	K	U	P	F	N
G	U	I	D	E	D	O	G	S	T	A	S	M	A	N	I	A
R	T	A	E	R	T	H	K	X	E	R	J	R	C	N	S	P
A	G	L	E	A	R	N	E	M	V	N	Y	W	A	P	O	B
D	E	A	P	T	V	S	E	O	R	E	H	H	S	L	C	E
U	T	B	Y	U	A	I	H	Q	Y	S	P	I	E	A	I	L
A	I	R	L	R	P	N	D	E	T	S	C	S	B	Y	A	L
T	D	A	N	I	J	P	O	K	L	R	B	T	O	T	L	Y
E	M	D	O	I	C	B	Y	D	I	P	O	L	P	R	I	R
F	O	O	I	U	D	K	Y	E	A	K	N	E	G	A	S	U
Y	B	R	S	V	O	L	U	N	T	E	E	R	L	I	A	B
H	I	E	U	T	G	R	B	S	T	K	O	R	W	N	T	S
E	L	L	L	E	A	D	H	A	U	W	E	H	O	I	I	E
A	I	D	C	S	G	N	O	K	H	U	A	W	B	N	O	F
L	T	N	N	J	S	C	O	L	L	A	R	G	E	G	N	U
T	Y	A	I	N	D	E	P	E	N	D	E	N	C	E	I	S
H	J	H	D	S	F	U	N	D	R	A	I	S	I	N	G	E

Bellyrubs

Bone

Bowl

Collar

Community

Dog

Donate

Fundraising

Graduate

Grow

Guide Dogs Tasmania

Harness

Health

Heroes

Inclusion

Independence

Kong

Labrador

Lead

Learn

Lick

Mobility

Play

Puppy

Socialisation

Tail

Training

Treat

Vet

Volunteer

Wag

Whistle



# Resources

## Superhero Masks



Colour me in

Cut me out

Put me on



# Resources

## Superhero Masks



Colour me in

Cut me out

Put me on



# Resources

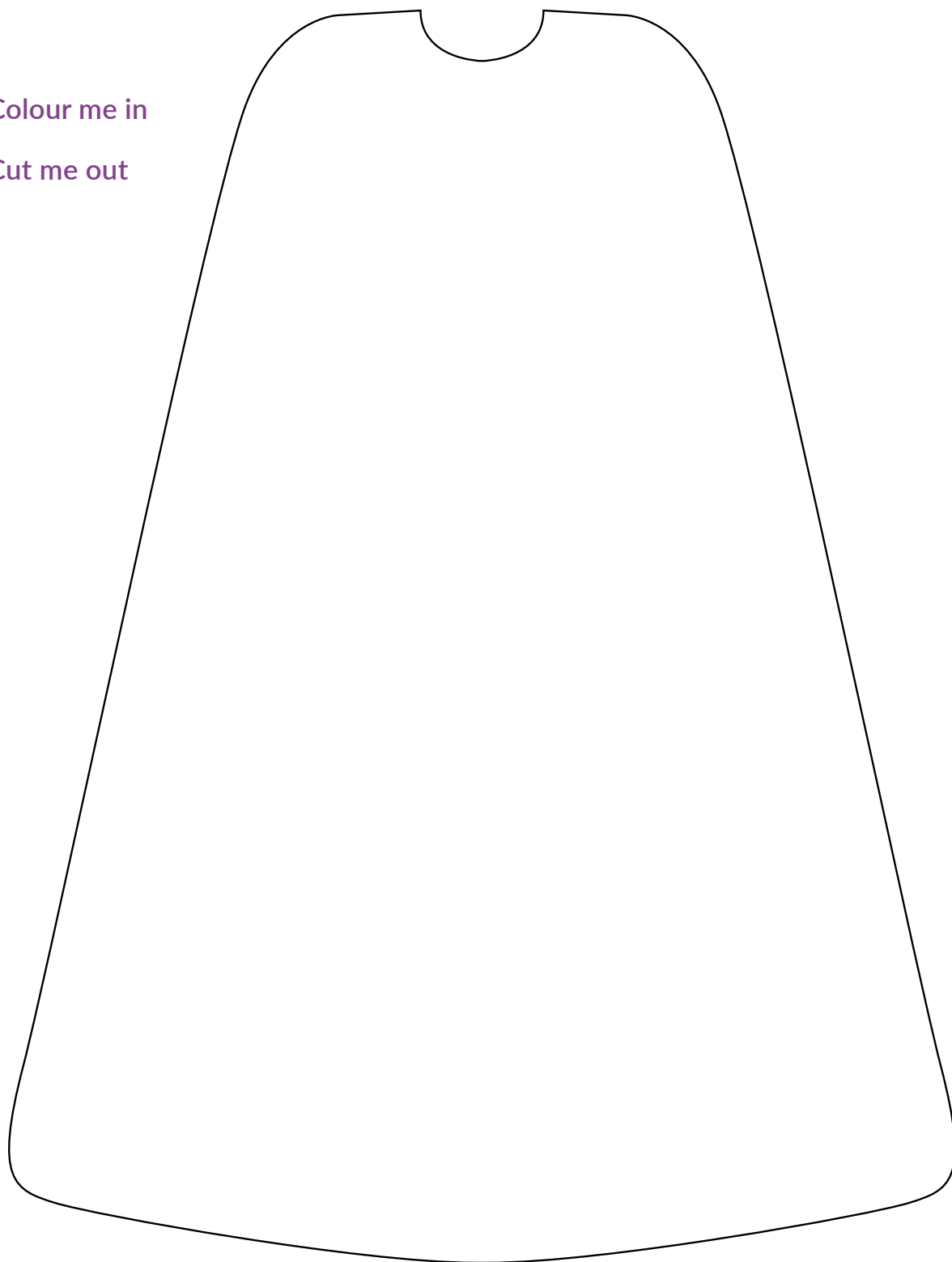
## Superhero Cape



Colour me in



Cut me out





# WE'RE A GUIDE DOGS TASMANIA

# SUPER SCHOOL

We're dressing up to help raise very special dogs,  
who have the power to change lives!



School:

Date:

# How to register

The quickest and easiest way to register, start fundraising and deposit your Super School donations is via our online fundraising platform:

 [guidedogstas.grassrootz.com/super-schools](https://guidedogstas.grassrootz.com/super-schools)

Alternatively you can complete the registration form, fundraising agreement, and remittance form and return to Guide Dogs Tasmania via:

**In person / Post**

164 Elizabeth Street Hobart TAS 7000

**Email** a photo of all forms to

[superschools@guidedogstas.com.au](mailto:superschools@guidedogstas.com.au)

## Registration form

Name of Volunteer Fundraiser/Event Coordinator: .....

Signature: ..... Date: .....

Name of Childcare/Early Learning/School/Company/Community Group:

.....

Postal Address: .....

Suburb: ..... State: ..... Postcode: .....

Phone Number: ..... Mob: .....

Email: .....

ABN: .....

# Fundraising Agreement



I, (Fundraiser's name) ..... offer to hold my

Fundraising Event (Event name) .....

in accordance with the Super Schools Terms and Conditions.

I understand my obligations with regards to sending the proceeds raised to Guide Dogs Tasmania within 14 days.

I agree to conduct my event in a manner which upholds Guide Dogs Tasmania's integrity, professionalism and values. I agree to inform Guide Dogs Tasmania if the details of my event deviate from those stated on this Offer Form.

Signature: ..... Date: .....

If you are under 18 years of age, please have your parent / guardian / teacher sign this form on your behalf.

Name of nominated adult supervisor: .....

Phone Number: ..... Mob: .....

Email: .....

Guide Dogs Tasmania reserves the right to withdraw its approval for the fundraiser/ event at any time if it appears that there is a likelihood of the fundraiser failing to adhere to any of the terms and conditions.



# Remittance Form



How to deposit your Super School donations to Guide Dogs Tasmania if you are not using Grassrootz:

## Direct Deposit

Deposit funds at any Westpac Bank or online into the below account:

Bank: Westpac Bank

Account Name: VisAbility Limited Tas

BSB 036000

ACC 919556

Please reference your deposit – Superschools + Name

## Cheque

All cheques to be made payable to Guide Dogs Tasmania

Name of Volunteer Fundraiser/Event Coordinator: .....

Name of Childcare/Early Learning/School/Company/Community Group:

.....

Postal Address: .....

Suburb: ..... State: ..... Postcode: .....

Phone Number: ..... Mob: .....

Total amount deposited: \$ ..... Date deposited: .....

Branch deposited: .....

Would you like your receipt addressed to: ☐ School ☐ Individual registration details



# Frequently Asked Questions

## **What does a Guide Dog do?**

A Guide Dog and its vision impaired handler work together as a team. The Guide Dog follows directions from their handler while concentrating on dealing with obstacles in the environment. The Guide Dog will be looking out for things like kerbs, traffic and dangerous obstacles. The Guide Dog will find the safest path for their handler to follow to get to their destination.

## **What does an Autism Assistance Dog do?**

An Autism Assistance Dog can improve quality of life for both a child and their family by improving social participation, inclusion, connectedness, independence and safe community access. An Autism Assistance Dog is trained to assist with calming behaviour, reducing episodes of sensory overload and interrupting behaviour patterns. An Autism Assistance Dog can also help with the child's safety encouraging them to walk calmly alongside their dog.

## **How long does it take to train a Guide or Autism Assistance Dog?**

It takes nearly two years to train a Guide or Assistance Dog. Training starts from very soon after the pups are born. At eight weeks, the pups are placed with volunteer foster families, called Puppy Raisers. Our Puppy Raisers have the pups until they are about 18 months old, during which time they do a lot of work to ensure pups are well socialised and well mannered. This is followed by four to six months of intensive training with a Guide Dog Instructor ensuring the dog learns all the skills it needs to become a Guide Dog. It then takes a month or so to train each vision-impaired person and their Guide Dog so they can work effectively together as a team to ensure their safety and independence.

## **Can you pat a Guide or Assistance Dog?**

Put quite simply: No. Whenever our dogs have their distinctive orange training coats on, we ask that people ignore the dogs as much as possible, don't seek eye contact and definitely do not try to pat or feed them. This can be very difficult, however, it is very important. When the dogs have their training coats on, they have to learn that they are on duty and need to concentrate and behave appropriately. If people are trying to pat the dogs, talk to them, or worst of all, trying to feed them, these things can quickly break down the hard work that has gone into their training. Rest assured, the dogs get lots of opportunities to just relax and play without the training coats on, but most of the time this is at home or at the free run parks. While it is hard to do, the best thing you can do when you see a Guide or Assistance Dog in training or a working Guide Dog in harness is to try hard to ignore them.

# More Frequently Asked Questions

## **Where do your dogs come from?**

We source puppies from established Guide Dog Breeding centres in Australia and New Zealand, and all training is conducted right here in Tasmania.

## **How can I tell when a dog is working?**

A Guide or Autism Assistance Dog is working (or in training) when it's wearing its orange training coat or harness.

## **Can Guide Dogs go anywhere?**

Yes! Guide Dogs in harnesses or official training coats are legally allowed access to go everywhere their handler does. It is an offence to refuse a person with a Guide Dog entry into a public place.

## **What is the average working life of a Guide Dog?**

Guide Dogs usually begin work with their clients at about two years of age, with a well-earned retirement at approximately ten years of age.

## **How much does it cost to train a Guide or Autism Assistance Dog?**

Our puppies are specifically bred to meet the demands of Guide and Assistance Dog work, in order to ensure they are physically and temperamentally suited to the task.

They are then placed with Puppy Raising families to learn all about socialisation and basic good manners. During this time, Guide Dogs Tasmania meets all costs associated with equipment, feeding and supervision for our puppies. In all, it costs over \$50,000 to train each of our Guide Dogs.

## **Is a Guide Dog always working and does it always have to wear a harness?**

From a very young age, the puppies in our programs are taught to understand that when they are wearing their special training coats or harness, that they are 'on duty' and are expected to behave accordingly.

When out of their puppy coat or harness, the dogs are encouraged to play and relax, just like any other dog. However, there are a few special rules to abide by to ensure our dogs are always well mannered when in public. Guide and Assistance Dogs only work for a short period each day - so play, naps and cuddles make up a large portion of their daily activities.



# Even More Frequently Asked Questions

## **What is involved in Guide and Assistance Dog Assessment and Training?**

When our puppies are around 16 months old, we bring them in for assessment and then, hopefully, the formal component of their training. We say hopefully, for despite all of our best efforts, there is no guarantee that our pups will successfully complete the Guide Dog Training Program. Once a puppy has successfully completed its assessment, it can then move into formal training with a Guide Dogs Tasmania dog trainer.

Guide Dogs must learn to move smoothly and safely through the environment, taking care to ensure they do not allow their handler to contact obstacles or trip over kerbs, whilst also ensuring they successfully locate destinations, indicate stairs, escalators and lifts, and safely cross any roads.

Autism Assistance Dogs are carefully trained to provide independence, peace of mind, and to support an autistic child and their family to feel comfortable, safe, and confident in the community.

Once they have successfully completed their training, the dogs are ready to put on their superhero capes and be matched with a Tasmanian living with a disability or illness in our community.

Still got questions? Great! Visit [guidedogstas.com.au](http://guidedogstas.com.au) for more information on how we raise and train heroes.

To speak to someone from  
hero headquarters...

(03) 6232 1222

[superschools@guidedogstas.com.au](mailto:superschools@guidedogstas.com.au)

164 Elizabeth Street, Hobart TAS 7000

[guidedogstas.com.au](http://guidedogstas.com.au)

**THANK  
YOU**



Guide Dogs Tasmania is owned and operated by EverAbility Group Ltd ABN: 11 157 291 960

Guide  
Dogs  
TAS

**SUPER SCHOOLS**